

# ROCK WRITINGS

Official Monthly Publication of the Nevada County Gem & Mineral Society

Volume 44, Number 9

Nevada City - Grass Valley, California

September 2010

## President's Message by Jan Longacre

If you missed the last meeting, it was special. The junior Rockhounds did the program, and they did GOOD. Dan finished it off with a Jade hunt on the coast. Fun. Well here we are with the fair over and school started again. Seems like summer just started. Hope everyone had a great time, and went on a field trip or two. Congratulations Jonathan on your placing in the contest for web-master. You have done a great job on the website, and we all appreciate you!! Everyone has done so much for our club; I just want to thank you all. The show is coming along right on schedule, thanks to Kim & Joyce. It is time to sell tickets and put out the fliers. Joyce Smith from the Grass Valley School Dist. after school program would like someone to give a presentation. If you have the time and would like to I have her phone number. See you in a few days.



*Jan*

## September Program

It's Show and Tell time! Many of us have been out collecting rocks, fossils and other treasures this year, and now it is time to show off something to your fellow club members at the September Meeting. Or you may have been working with some of your collected items and have turned them into jewelry or some other kind of project. Aren't you proud of your efforts? Don't keep it to yourself, bring it out and share it along with a story to accompany it.

Deadline for the October 2010  
Newsletter is September 21, 2010

## Junior Rockhounds Meeting

This year August was designated as Jr. Rockhound month. We had a good meeting with six out of eleven members present at the NCGMS meeting. We talked about our collections, where we got our rocks, and some of the field trips we had been on. Our Jr. Rockhound Chairman, Jennifer Wren, talked about plans for the show in October and how we will finish out the year of 2010.

We need rocks to fill the kid's corner bags. Please bring them to the September general meeting, or call me to pick them up.

Emma Lay has volunteered as my assistant, I am very happy to have her help.

Mary Tucker offered her rocks, collected by her husband Osmer and herself for 35 years, to the Jr. Rockhound club. I, Bill, Sam, Julie-Anne, Alex, Vicky and Gary met at Mary's house to pick up the rocks. Mary said Osmer, who passed away 5 years ago, would have been proud to donate their collection to the Jr's. Mary has lived 27 years in Grass Valley and collected primarily in So. California, Arizona and Nevada, mainly rock hounding with our club.

Our thanks to Osmer and Mary Tucker!

Melba Sagaser

## Earth's Treasures is Next Month

It is almost time for our annual show and we have a lot to do between now and show time. During our September General Membership Meeting we will be talking about the show and seeing what needs to be done before the show. We will also be requesting members to sign up to help with setup, teardown and help during the show. We want your inputs.

## September Calendar of Events

Sep 6	Labor Day
Sep 7	Board Meeting at 6:00 p.m.
Sep 7	General Membership Meeting at 7:00 p.m.
Sep 21	Newsletter Deadline
Sep 23	First Day of Autumn



## September Birthdays

Sep 02 – Chris Moore  
 Sep 16 – Carollyn Lutton  
 Sep 17 – Don King  
 Sep 21 – Gary Hunt  
 Sep 21 – Trinity Rivera  
 Sep 25 – Debbie Bartels



### Welcome to Our Newest Members!

Janelle Pattee and Brandi Chambers  
 and Robin Chambers

### Lapidary Magazines and Books Needed for Show

Do you have any magazines or books laying around that you don't need anymore? We always have a table at our show with "Free for the taking" magazines and books. Sharing your unwanted items may just get someone interested in our hobby and club. Please bring them with you on the day of our show setup for the table. Thank you!

### Show Exhibit Applications

Exhibit Chairman Jon North recently sent out Show Exhibit applications to everyone on his list. If you received an application in the mail, please return it as soon as possible. Even if you don't plan on exhibiting, please check the appropriate box and return it so Jon can finalize the list of exhibitors. If you didn't get an application but want to exhibit, call Jon at (916) 768-0137 or email him at jon-north@comcast.net. He will get on to you in a flash. There will also be some applications at the Meeting.

### September Birthstone is Sapphire

Sapphires have been a greatly valued gemstone for thousands of years. It is said that King Solomon wore a sapphire ring. The blue sapphire has been associated with the heavens and the sky. The ancient Persians believed that the earth rested on a giant sapphire and its reflection colored the sky. Sapphire symbolizes sincerity and faithfulness. They also represent Divine favor, and were the gemstone of choice for kings and high priests. The Crown Jewels of Britain are full of large blue sapphires.



Sapphire is one of the few gems that comes in a variety of colors, all being treasured. They come in pink, orange, yellow, blue, green, purple, black, and colorless. A pure sapphire is colorless, and colored sapphires are a result of chemical impurities. The impurities are usually iron, titanium, and chromium. The most valuable sapphires are a vivid blue color. Sapphire is composed of  $Al_2O_3$  and has a hardness of 9. It ranges from transparent to opaque. It has no cleavage. Cat's eyes and stars can be found in sapphires, caused by rutile needle inclusions.

Sapphires come from Burma, Kashmir, Sri Lanka, Thailand, Australia, Cambodia, Nigeria, Kenya, Tanzania, China, Vietnam, Madagascar, and the United States. The best source in the United States is Montana. Those folks that have sapphire for a birthstone, are sure a lucky lot. This is an extraordinary gemstone!

By Jonathan North

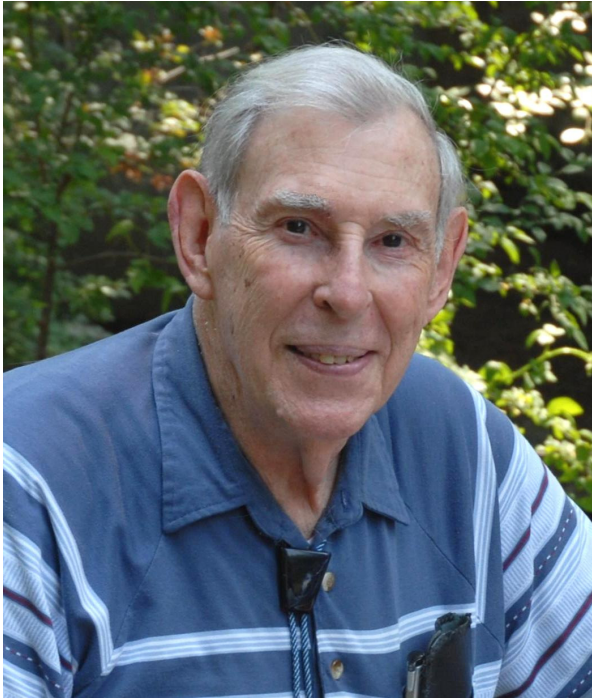


Mary Tucker is home and doing well. Sad news to hear about Bill Budd and Doris Patrick passing away recently. See page 3 for short memorials on both Bill and Doris.

Mary Tucker is our Sunshine reporter. Mary would like any news you would like to share with our members reported to her by calling (530) 265-8320 or you can also contact Jonathan North, editor at (916) 768-0137.

## William (Bill) Budd

July 23, 1926 - August 18, 2010



Bill Budd was always one of our most active members. He and his wife, Lois, joined our club in 1993 after they moved to the Grass Valley area.

Originally from the east coast, he served in the Navy and then attended college, receiving a BS degree in electrical engineering and later a Masters degree. They moved to the bay area in 1953. Bill worked as an electrical engineer at GTE for many years.

Bill and Lois became interested in rocks and gems when their children showed an interest in the hobby. They belonged to the Peninsula Gem & Geology Society prior to joining the Nevada County Gem & Mineral Society. They also had their own jewelry business, Spectrum Design Jewelers in San Jose.

Bill did some excellent lapidary and jewelry making over the years and even won ribbons at federation shows. He also taught jewelry and cab-making to club members. Bill always had an exhibit case in our shows. Another one of his favorite hobbies was photography and could be seen taking photos at meetings and other functions. He had numerous photos in the local newspapers too.

Bill was a true friend and will be missed.

## Doris Patrick

July 8, 1904 - July 23, 2010



Doris Patrick was special to our club. In fact, she was a life member and our last charter member. She helped to start the club and was always involved in every aspect of the club while she was with us.

Doris Was born in Oakland, CA in 1904. She worked as a secretary for the Berkeley Board of Education for 30 years and upon retirement, moved to Grass Valley with her husband Vernon. In 1966 they joined the Nevada County Gem & Mineral Society. Vernon passed away in 1970.

Doris loved geology and enjoyed going on field trips and had a nice collection of gems and minerals. Every year she had an exhibit case in our annual show and was always involved. Doris always kept busy and worked as a docent in a local church museum for years. She even drove herself wherever she went until her eyesight failed due to macular degeneration at the age of 102. Doris spent the last few years living with her son Richard, in Livermore. Her other son, Raymond, lives in Petaluma. Doris was 106 when she passed away.

We will miss her and shall always have the fondest of memories.

**Nevada County Gem & Mineral Society  
Board Meeting Minutes  
August 3, 2010**

**Meeting called to order by** President Jan Longacre at 6:10 pm

**Members present:** Terry Bartels, Dan Chaplin, Snakes Hoffman, Jan Longacre, Todd Lawson, Julie-Anne Lay, Kim Moore

**Minutes from June Board meeting:** Approved as printed in July bulletin

**Treasurer's Report:** Accounts healthy. Todd will take care of Show insurance and charitable trust application for Show raffle. Payment approved for newsletter and Federation meeting expenses for Jonathan North.

**Correspondence:** Show flyers and a letter received by Bill & Melba Sagaser from a lady on the east coast who had found their name on the club website and is probably a distant relative.

**Committee Reports:**

**Membership:** New application approved for Jan Pattee, husband Robin Chambers and daughter Brandi Chambers.

**Bulletin:** no report

**Field Trips:** Coop list on table

**Federation:** Jonathan attended recent meeting.

**Historian:** Emma received photos from Vicki Black and is putting them in an album

**Show Chairman:** Still looking for food vendor at this time. Show is full and all vendors have paid. All ads are going out early August. Signs will go up first week in September. All members to take flyers to distribute.

**Webmaster:** website took 3<sup>rd</sup> place in CFMS competition. Great job Jonathan!

**Picnic:** No report

**Program:** Next month "Show and Tell" – bring rocks and stories to share with the club

**Continuing Business:** None

**New Business:** None

**Meeting adjourned:** 6:45pm

Respectfully Submitted,  
Julie-Anne Lay, Secretary,  
Nevada County Gem & Mineral Society

**Nevada County Gem & Mineral Society  
General Meeting Minutes  
August 3, 2010**

**Meeting called to order by** President Jan Longacre at 7:05 pm

**Pledge of Allegiance**

**Attendance:** 25 members & 5 guests

**Sunshine:** Mary Tucker, Bill Budd and Frank Rohleder are all in our thoughts

**Birthdays:** Happy Birthday to all August birthdays

**Program:** Presentation by the junior rockhound club and then a "Cash & Treasures" episode on collecting jade at Jade Cove, CA.

**Minutes from June Board meeting:** approved as printed in bulletin

**Treasurer's Report:** Accounts healthy

**Correspondence:** Show flyers and a letter received by Bill and Melba Sagaser from a distant relative on the east coast who had found their name on the club website.

**Committee Reports:**

**Membership:** No report

**Bulletin:** No report

**Field Trips:** Trip to Gladys Eckhart's was very successful and she still has rocks left so Todd will call to see if the club can go on another day for those who missed it.

**Federation:** No report

**Show Chairman:** Everything coming together. Members need to start handing out flyers. Raffle tickets will be given out next month.

**Webmaster:** website came in 3<sup>rd</sup> place in CFMS competition

**Hospitality:** Big thanks to Melba

**Historian:** Need photos from 2009 and 2010 picnic and 2009 Christmas potluck.

**Program:** Next month "Show and Tell"

**Continuing Business:** None

**New Business:** Need member volunteer to give presentation to a Grass Valley school, call Jan for more information.

**Meeting adjourned:** 8:30pm

Respectfully Submitted,  
Julie-Anne Lay, Secretary,  
Nevada County Gem & Mineral Society

## Last Month's Program

Last month's program was a good one. Our Junior Rockhounds put on the program and probably taught all us older folks a thing or two. Read the Junior Rockhound Meeting article on page one.

## Shop Tip

Did you ever wonder how to find out the Revolutions Per Minute (RPM) that your saw blade or grinding wheel is turning? Multiply the motor RPM by the diameter of its pulley and then divide it by the diameter of the driven pulley.



**CFMS  
PRESIDENT'S MESSAGE**

**Grow the Federation!  
By Fred Ott**

Throughout the year, I've often mentioned the need for a Society to be organized if it hopes to be a vibrant, successful organization. One of the seemingly 'dry' subjects for a Society to address is the matter of its Governing Documents (e.g. Bylaws; Officers, Directors and Chairpersons Manual; Policies and Procedures Manual) which form the foundation of a Society's success. However, without well-written, up-dated documents, a Society will find it difficult to function effectively.

Here is how one Society has addressed this issue: the President appointed a Chairperson of a new **Governance Committee** who, with the help of several volunteers, has met on a regular basis to review and update each of the Society's governing documents. Since it requires a lengthy, formal notification process and a vote of the General Membership to change the Society's bylaws, every effort was made to limit the amount of details included in the bylaws. Conversely, the Officers, Directors and Chairpersons Manual and the Policies and Procedures Manual require only the approval of the Board of Directors so changes to those two documents can be made in a more timely manner.

Of particular value in the Officers, Directors and Chairpersons Manual are the **Duties and Responsibilities** statements for each individual. These statements provide an excellent introduction for those individuals who are accepting those areas of responsibility as well as a review for those who currently occupy those positions.

In addition to having updated governing documents, societies can then benefit immensely by providing each officer, director and/or chairperson with a binder that addresses the many aspects of their respective position. A common 'theme' that I've heard throughout the years is that in-coming officers, directors and chairpersons are provided with very little guidance when accepting their position. By having a binder which is updated each year, no one has to 're-invent the wheel' at every change in leadership.

**Remember: rockhounding is MORE than a hobby;  
it's a PASSION!**

**Fred Ott, President 2010**

From CFMS Newsletter, 9/2010

**CO-OP MEMBER & OTHER FIELD  
TRIPS FOR 2010/2011**

- Sept. 11** Tulead Canyon, CA/NV Border for Tulead agate. Paradise Club, Mike Eggleston
- Date TBA** Minnesota Mine for minerals, Sacramento Mineral Society, Joe Shook.
- Oct. 2** Griffith Quarry, Penryn, CA for a tour of the quarry, Lincoln Hills Club, Ron Clawson
- Oct. 9, 10** Fernley, NV for various minerals, Sutter Buttes Club, Gerry Hill
- Oct. 16** Rare Rock Mosaic Art Museum, Santa Rosa, CA, Oroville Club, Charlee Ann Lewis
- Oct. 23, 24** New York Cyn., NV for epidote, copper, minerals, microcline, RRR Club, Jim Hutchings
- Nov. 7** Black Butte Reservoir for jasper, El Dorado Co. Club, Ron Stone
- Nov. 24-28** Afton Canyon, Basin Rd., CA for agate, jasper, fluorite, aragonite, Seginite, onyx, etc., Mother Lode MS, Al Troglin
- Jan. 5-22, 2011** Tanzania, East Africa for sapphires, other gems & minerals. North Bay Field Trips, Contra Costa Mineral & Gem Society, Dennis Freiburger. **Deadline to sign up for this trip is September 2010. call Dennis Freiburger right away.** (For contact information, contact your club's field trip leader or editor.)

11th version, August 1, 2010, CO-OP



**A “CO-OP MEMBER” FIELD TRIP TO TULEDAD CANYON**

- This trip is open to all rockhounds who agree to abide by the AFMS Code of Ethics, the directions of the field trip leader and practice safe rockhounding.
- **Call the field trip leader beforehand** to sign up and for further information.
- Remember to wear your name badge and sign in with the field trip leader.
- CO-OP website has information: [www.ourfieldtrips.org](http://www.ourfieldtrips.org) (Password is needed).
- A Consent and Assumption of Risk Waiver of Liability form must be signed upon arrival at meeting site.
- **Insurance Requirements:**
- All non-CFMS members must provide proof of personal liability insurance (homeowners or renters).

**TRIP LOCATION** – Tuledad Canyon, CA/NV (on the border)

**TRIP DIFFICULTY RATING SCALE**

**Vehicle Access & Parking** - #5, 2 wheel, vehicle parking on rough terrain or trail end

**Collection or View Site** - #6, ¼ to ½ mile with trails on hillsides, or through brush and creek beds

**WHEN** – September 11, 2010

**SPONSOR CLUB** – Paradise Gem & Mineral Club

**MEMBER'S GUESTS** - Allowed

**COLLECTION MATERIAL** – Tuledad agate

**LEADER & CONTACT INFO** –**Contact by Sept. 8<sup>th</sup>**, Information for club members only.

**PROPOSED SCHEDULE** - Meet at 9:00 a.m. on Sept. 11<sup>th</sup>.

**MEET**- Privileged information.

**DIRECTIONS TO SITE/CAMP** – caravanning with the field trip leader from Susanville.

**VEHICLE REQ'S** – High clearance 2-wheel drive

**CAMP/FACILITIES** – Nearest motel to site is in Cedarville—35 miles. Dry camping on-site.

**TOOLS** –hammers, bars, shovels, sledge hammer

**SAFETY CONCERNS** – snakes, high desert with no facilities

**CLIMATE/WEATHER** – probably warm but may be anything

**CLOTHING** – wear layers

**OTHER REMARKS** – Lots of possibilities in this area—Davis Creek, Cedarville wood, Black Rock Desert

**A "CO-OP MEMBER" FIELD TRIP TO THE GRIFFITH QUARRY, PENRYN, CA**

- This trip is open to all rockhounds who agree to abide by the AFMS Code of Ethics, the directions of the field trip leader and practice safe rockhounding.
- **Call the field trip leader beforehand to sign up** and for further information.
- Remember to wear your name badge and sign in with the field trip leader.
- CO-OP website has information: [www.ourfieldtrips.org](http://www.ourfieldtrips.org) (Password is needed).

**TRIP LOCATION** – Griffith Quarry, Penryn, Placer County, CA. The quarry was established by Griffith a native of Wales in 1864. The quarry produced high-quality granite used to construct many buildings in San Francisco and Sacramento, including parts of the California State Capital. The office of the quarry is now a museum that contains history about the site as well as other local history. Some of the original furniture of the Griffith Quarry is intact.

**TRIP DIFFICULTY RATING SCALE**

**Vehicle Access & Parking** - # 3 vehicle access and parking good for most vehicles, no specific handicap parking

**Collection or View Site** - # 4 flat ground, unpaved sections, handicap access with some help

**WHEN** – October 2, 2010, at 10:00 a.m.

**SPONSOR CLUB** – Sun City Lincoln Hills Gem and Mineral Society.

**MEMBER'S GUESTS** - Allowed

**COLLECTION MATERIAL** – None. This is a County park.

**LEADER & CONTACT INFO** – **Please contact if you can attend.** Withheld for privacy.

**PROPOSED SCHEDULE** - We will meet at 10:00 a.m. on Saturday October 2, 2010. A historic tour will be lead by a Griffith Quarry Museum docent.

**MEET** - Parking lot. The quarry is located at the intersection of Taylor Road and Rock Springs Road in Penryn, Placer County, California.

**DIRECTIONS TO SITE** - From I- 80 Eastbound from Sacramento, take the Penryn Road exit (#112) and go over the freeway. (From I-80 Westbound, take Penryn Rd. exit (#112) and turn Right onto Penryn Rd.) Go to Taylor Blvd. and turn Right onto Taylor Road. Go to the signal in Penryn and turn Right, onto 7698 Rock Springs Road, Penryn, California.

**VEHICLE REQ'S** – There are no special requirements.

**CAMP/FACILITIES** - Water is available. Great breakfast at The Ugly Mug Café. 3589 Taylor Road, Loomis, CA 95650, 916-652-5241. First class lodging at Thunder Valley Casino, 1200 Athens Avenue, Lincoln, CA 95648, 916-408-7777.

**TOOLS** – Camera

**SAFETY CONCERNS** – None

**CLIMATE/WEATHER** - Bring a raincoat.

**CLOTHING** - No special clothing needed. You will be walking on a county maintained trail.

**OTHER REMARKS** – Hot dogs will be served after the tour.

# CFMS 2010 SHOWS

**September 3-6 2010, Fort Bragg, CA**  
 Mendocino Coast Gem & Mineral Society  
 Town Hall  
 Corner of Main & Laurel  
 Hours: Fri-Sun 10-6 -- Mon 10-4  
 Don McDonell (707) 964-3116  
 Email: [ejwebb@mcn.org](mailto:ejwebb@mcn.org)

**September 18-19 2010, Redwood City, CA**  
 Sequoia Gem & Mineral Society  
 Community Activities Building  
 1400 Roosevelt Ave.  
 Carol Corden (650) 248-7155  
 Email: [ccorden@comcast.net](mailto:ccorden@comcast.net)  
 Website: <http://sgms.driftmine.com>

**September 18-19 2010, Paso Robles, CA**  
 Santa Lucia Rockhounds  
 Pioneer Park  
 2010 Riverside Drive  
 Hours: 10-5 Daily  
 Kim Patrick Noyes (805) 610-0603  
 Email: [kimnoyes@gmail.com](mailto:kimnoyes@gmail.com)  
 Website: <http://slrockounds.org>

**September 18-19 2010, Stockton, CA**  
 Stockton Lapidary & Mineral Club  
 Scottish Rite Masonic Center  
 33 W. Alpine Ave.  
 Hours: 10-5 Daily  
 (209) 946-0113  
 Email: [footsey1@yahoo.com](mailto:footsey1@yahoo.com)  
 Website: <http://www.stocktonlapidary.com>

**September 25-26 2010, Monterey, CA**  
 Carmel Valley Gem & Mineral Society  
 Monterey Fairgrounds  
 2004 Fairgrounds Road  
 Hours: Sat 10-6; Sun 10-5  
 Susie Harlow  
 Email: [Susie@tghcpa.com](mailto:Susie@tghcpa.com)  
 Website: <http://www.cvgms.org>

**October 2-3 2010, Oroville, CA**  
 Feather River Lapidary & Mineral Society  
 Oroville Municipal Auditorium  
 1200 Meyers Street  
 Hours: 10 - 5 Daily  
 Connie Rossetto (530) 589-1840  
 Email: [crossetto@aol.com](mailto:crossetto@aol.com)  
 Website: <http://www.OrovilleRocks.com>

**October 3 2010, Fallbrook, CA**  
 Fallbrook Gem & Mineral Society  
 Fallbrook Gem & Mineral Facility  
 123 West Alvarado Street  
 Hours: 10 - 4 Daily  
 Mary Fong-Walker (760) 728-1130  
 Email: [ikonmiming@gmail.com](mailto:ikonmiming@gmail.com)

**October 9-10 2010, Grass Valley, CA**  
 Nevada County Gem & Mineral Society "Earth's Treasures"  
 Nevada County Fairgrounds  
 11228 McCourtney Road  
 Hours: 10 - 5 Both Days  
 Kim Moore (530) 470-0388  
 Email: [kmoore160@comcast.net](mailto:kmoore160@comcast.net)  
 Website: <http://www.ncgms.org>

From CFMS Website August 2010

*Fossils For Fun Society Invites  
 You To*

*The 10th Annual Tailgate  
 Gemboree*

*September 11 & 12, 2010*

*Saturday and Sunday*

*9 to 5*



*Join us at the Kennedy Mine in Jackson for*  
*-Free Admission (\$2 parking)*  
*-Fossil and Rock Exhibits & Dealers*  
*-Teacher Specials on Fossils*  
*-Saturday Evening Potluck and Live Auction*  
*-Kennedy Mine Tours Available*

	<b>RELIABLE</b>
	<b>RV</b>
	530-272-4858
	530-272-6950
<b>PARTS</b>	13368 Grass Valley Avenue
<b>SERVICE</b>	Grass Valley, CA 95945
<b>STORAGE</b>	



## Nevada County Gem & Mineral Society



### 2010 ELECTED OFFICERS

<b>PRESIDENT</b>	Jan Longacre
<b>VICE PRESIDENT</b>	Dan Chaplin
<b>SECRETARY</b>	Julie-Anne Lay
<b>TREASURER</b>	Todd Lawson
<b>DIRECTORS</b>	Kim Moore Snakes Hoffmann Terry Bartels

### 2010 COMMITTEE CHAIRPERSONS

<b>FEDERATION DIRECTOR</b>	Jonathan North		
<b>FIELD TRIP DIRECTORS</b>	Vicki Black Tony Kampitch		
<b>HISTORIAN</b>	Emma Lay		
<b>HOSPITALITY</b>	Melba Sagaser		
<b>LIBRARIAN</b>	Alex Lay		
<b>MEMBERSHIP</b>	Jonathan North		
<b>PARLIAMENTARIAN</b>	Vacant		
<b>CLUB PICNIC</b>	Anita Wald-Tuttle		
<b>JUNIOR PROGRAM CHAIRMAN</b>	Jennifer Wren		
<b>JUNIOR PROGRAM ASST.</b>	Melba Sagaser		
<b>PROGRAM</b>	Dan Chaplin		
<b>PUBLICITY</b>	Robert & Joyce Emerson Kim Moore		
<b>REFRESHMENTS</b>	Birthday Honorees		
<b>SHOW CHAIRMAN</b>	Kim Moore		
<b>SHOW CHAIRMAN, ASSISTANT</b>	Marty Patton		
<b>SHOW DEALER CHAIRMAN</b>	Joyce Emerson		
<b>SUNSHINE</b>	Mary Tucker		
<b>NEWSLETTER EDITOR</b>	Jonathan North	(916) 768-0137	<a href="mailto:jonnorth@comcast.net">jonnorth@comcast.net</a>
	1440 Musgrave Dr. Roseville, CA 95747-6257		
<b>WEBMASTER</b>	Jonathan North	(916) 768-0137	<a href="http://www.ncgms.org/">http://www.ncgms.org/</a>

### Nevada County Gem & Mineral Society Meetings

The Nevada County Gem and Mineral Society holds two meetings every month with certain exceptions. The membership is informed of exceptions during meetings and through Rock Writings. You are welcome to attend any meeting.

#### **Executive Committee Meeting:**

First Tuesday of the month, 6:00 p.m.  
Golden Empire Grange Building  
11363 Grange Ct., Grass Valley, CA

**Tues. Sep 7, 2010**

#### **General Membership Meeting:**

First Tuesday of the month, 7:00 p.m.  
Golden Empire Grange Building  
11363 Grange Ct., Grass Valley, CA

**Membership Dues:** Yearly membership dues for NCG&MS are \$20.00 for singles and \$25.00 for families. For more information or an application, contact Membership Chairman Jonathan North (916) 768-0137. \*Deduct \$5.00 if you receive your newsletter via email\*

#### **NCG&MS is a non-profit organization that has these objectives:**

- ♦ to promote the study of mineralogy, geology and fossils.
- ♦ to encourage the collection of minerals and gems.
- ♦ to foster the study and practice of the lapidary arts.
- ♦ to provide field trips to mineral localities.
- ♦ to promote good fellowship, education and recreation.



NEVADA COUNTY GEM AND MINERAL SOCIETY IS A PROUD MEMBER OF:  
AMERICAN FEDERATION OF MINERALOGICAL SOCIETIES, INC. (AFMS)  
CALIFORNIA FEDERATION OF MINERALOGICAL SOCIETIES, INC. (CFMS)



PERMISSION TO REPRINT ARTICLES IS GRANTED IF CREDITS ARE GIVEN.  
ARTICLES WITH NO CREDITS ARE WRITTEN BY THE EDITOR, JONATHAN NORTH

**Please send Exchange Newsletters & Newsletter Submissions to: Jonathan North, Editor**  
1440 Musgrave Drive, Roseville, CA 95747-6257 or Email: [jonnorth@comcast.net](mailto:jonnorth@comcast.net)

# NCG&MS "Rock Writings"

Nevada County Gem & Mineral Society  
 PO Box 565  
 Nevada City, CA 95959-0565

First Class Mail



September 2010



## General Membership Meeting

Tuesday, September 7, 2010  
 7:00 p.m.

Golden Empire Grange  
 11363 Grange Ct., Grass Valley

### September Program

Show and Tell! Bring specimens that you collected or something you made this year and show it off and tell everyone a little bit about it.

\*\* Bring a Friend! \*\*

Nevada County Gem & Mineral Society Present

## Earth's Treasures

2010

Sat. & Sun. October 9<sup>th</sup> & 10<sup>th</sup>, 2010  
 10:00 AM TO 5:00 PM

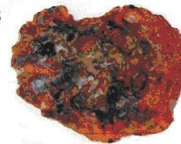
39th Annual Show

Exhibits of Rocks, Minerals,  
 Carved & Faceted Stones

SPECIAL PETRIFIED WOOD DISPLAY

Mineral Identification  
 Half Hourly Prizes  
 Jewelry Sales  
 Demonstrations

Childrens' Games  
 Silent Auctions  
 Mineral & Fossil Sales  
 Lapidary Equipment Sales



Raffles and door prizes

Admission: Adults \$2.00 Children FREE

Plenty of Free Parking  
 YOTMC Breakfast Sunday

The Nevada County Fairgrounds • Main Exhibit Hall  
 11228 McCourtney Road • Grass Valley, CA

Show chair person: Kim Moore 530-470-0388

Dealer chairperson: Joyce Emerson 503-559-2595