

ROCK WRITINGS

Official Monthly Publication of the Nevada County Gem & Mineral Society

Volume 44, Number 10

Nevada City - Grass Valley, California

October 2010

President's Message by Jan Longacre

Only a few days until the show. Are you all excited and ready!!! It will be awesome. Today I went to the Italian Festival, good music and food. Got rained on (well sprinkled on). It is all going so fast. We need everyone to start thinking about helping next year. Not that far off.



See you the first Tues. in Oct. then IT'S SHOWTIME.



Jan

October Program

For October, we have a couple subjects for the program. First, Jon North will show how to setup an exhibit case for the show. Possibly after the presentation, you might want to put in your own exhibit. There is still room and time. Next, Dan Chaplin will give a short program on cleaning up minerals. This can help to make your minerals more presentable and attractive. Believe it or not, very few minerals come in perfect condition; they just need some tender loving care to make them shine.



It's Showtime

This is the month of our annual show. It is the time that we can all pull together to show the public just what our club is all about.

Members and invited guests will be showing their collections of rocks, gems, jewelry, and other treasures. Every year brings many of our favorite exhibits back, and often some that we have never seen before. One of the show's attractions is the demonstration area where you can see just how to make a lot of different things related to our hobby. And let's not forget the dealers that sell everything needed to do any of the projects relating to our hobby. If you don't want to make something yourself, the dealers also sell finished jewelry, books, minerals, and much more. That's not all; there is a silent auction, kid's activities, hourly prizes, a raffle, food, and a chance to meet others that share the same interests.

All of this comes together for a great show if you help to make it so. Even though it is a lot of work, it is well worth the effort. Please help to make this the greatest show ever. During the show, make a point of talking to our guests too, they may want to know more about our hobby and club. See you there.

Elections are in November

The year is rapidly coming to an end and in November we will be electing officers for 2011. Some current officers don't mind continuing on for another year, but some have done their fair share for the club. Please consider running for one of the positions for next year. Nominations start this month.

October Calendar of Events

Oct 5	Board Meeting at 6:00 p.m.
Oct 5	General Membership Meeting at 7:00 p.m.
Oct 8	Show setup
Oct 9 - 10	Show
Oct 11	Columbus Day (Observed)
Oct 18	Newsletter Deadline
Oct 31	Halloween

October Birthstone is Opal

Opal is an unusual gemstone that has an origin different than any other gemstone. It is considered a mineraloid, meaning its structure is not truly crystalline. It is considered to be a sedimentary rock. To make its formation as simple as possible, opal was formed when water masses, heavily laden with silica, dried up. A small amount of water was trapped within the silica and creates the colorful appearance that we see. Opal is found in white, colorless, pale yellow, pale red, gray or black. The different colors are caused by impurities. They are transparent to translucent, and have a vitreous to pearly luster. It has no cleavage, fractures conchoidal, and it streaks white. Opal has a hardness of 5 - 6. Opal comes primarily from Australia, but is also found in Mexico and the Western United States as well as other locations throughout the world. Some opal has a large amount of color that sparkles and dances from within. This is called fire opal. Fire opal mostly comes from Mexico and Oregon. Opal is a delight to all those with a birthday in October, and loved by everyone else also!



By Jonathan North

Last Month's Program

Show and Tell was the subject. It was a pleasure to see a large number of members showing off items they collected over the summer. Along with it were some good stories on the collecting trips that they went on to find such treasures. We have a great club that has the spirit to get out and look for rocks and have some great adventures. Now we are on the roll, I can't wait until next year!



Sunshine Update



This last month was calm after last month. No one reported any problems, which is a very good thing.

Mary Tucker is our Sunshine reporter. Mary would like any news you would like to share with our members reported to her by calling (530) 265-8320 or you can also contact Jonathan North, editor at (916) 768-0137.

October Birthdays

Oct 05 – Susan Dubesa
Oct 07 – Ray Craine
Oct 07 – Ferne Olson
Oct 16 – Dack Burnette
Oct 18 – Terry Bartels
Oct 18 – Steven Crick
Oct 18 – Joyce Emerson
Oct 27 – Susan Gleason
Oct 28 – Rudy Thompson
Oct 28 – Nancy Spurgeon
Oct 30 – Duane DeWitt

Welcome to Our Newest Members!

Bill & Aeron Davis
and
Welcome Back
Susan Gleason

Lapidary Magazines and Books Needed for Show

Do you have any magazines or books laying around that you don't need anymore? We always have a table at our show with "Free for the taking" magazines and books. Sharing your unwanted items may just get someone interested in our hobby and club. Please bring them with you on the day of our show setup for the table. Thank you!

Show Exhibit Applications

Last month, Exhibit Chairman Jon North sent out Show Exhibit applications to everyone on his list. If you received an application in the mail, please return it as soon as possible. Even if you don't plan on exhibiting, please check the appropriate box and return it so Jon can finalize the list of exhibitors. If you didn't get an application but want to exhibit, call Jon at (916) 768-0137 or email him at jonnorth@comcast.net. He will get on to you in a flash. There will also be some applications at the Meeting.

**Nevada County Gem & Mineral Society
Board Meeting Minutes**
September 7, 2010

Meeting called to order by President Jan Longacre at 6:08 pm

Members present: Terry Bartels, Vicki Black, Dan Chaplin, Snakes Hoffman, Todd Lawson, Julie-Anne Lay, Jan Longacre, Kim Moore, Jonathan North, Melba Sagasar

Minutes from August Board meeting: Approved as printed in September bulletin

Treasurer's Report: Accounts healthy. Todd will get supplemental insurance for the Show by next week. Payments due for Fairgrounds and payments approved for officers' insurance policy and co-op membership.

Correspondence: Gem Faire flyers and Searles Lake Gem & Mineral Society Show both on Oct 9th/10th. Information from Colorwright Lapidary and Gems.

Committee Reports:

Membership: New membership applications approved for Bill & Aaron Davis and Susan Gleason. Jon needs another member to take over the membership position for 2011.

Bulletin: No report. Need volunteer to take over the bulletin for 2011, Jon is stepping down.

Field Trips: Vicki attended Co-Op meeting and paid the Club's \$15 dues for 2011. As a member of the Co-Op, the club needs to lead at least one field trip open to other Co-Op members each year.

Federation: Director's meeting will be in November. Need volunteer to become club representative.

Historian: No report

Show Chairman: Signs & banners are up. Apex catering will providing food and set up dinner. Melba will get lunch ready on Friday. Need members to bring in old magazines to give to the public. Kids corner will sell juice and healthy snacks. Jonathan still needs more display case exhibitors.

Webmaster: Todd Lawson will take over webmaster from Jonathan in 2011.

Program: Next month will be setting up a display case with Jon and how to clean minerals by Dan Chaplin.

Continuing Business: None

New Business: None

Meeting adjourned: 6:53pm

Respectfully Submitted,
Julie-Anne Lay, Secretary,
Nevada County Gem & Mineral Society

Clean Saw Oil

The next time you clean your slab saw, line the bottom with a double layer of burlap. When it's time to clean again pick up the liner by the corners and let it drain overnight on the carriage. Most of the sludge will be trapped inside the burlap and easily disposed of. The oil left is much cleaner and may probably be used again.

From Las Vegas and Gem Time ,via The Green Valley Rocker,
The Rocky Reader and The Golden Spike News. Via Rock Chips 12/98

**Nevada County Gem & Mineral Society
General Meeting Minutes**
September 9, 2010

Meeting called to order by President Jan Longacre at 7:05 pm

Pledge of Allegiance

Attendance: 35 members 0 guests

Sunshine: No report

Birthdays: Happy Birthday to all the September birthdays

Program: "Members Show and tell"

Minutes from August Board meeting: Approved as printed in bulletin

Treasurer's Report: Accounts healthy

Correspondence: Show flyers on table

Committee Reports:

Membership: Welcome new members Bill & Aaron Davis and returning member Susan Gleason. Jonathan needs a volunteer to take the membership position for 2011.

Bulletin: Need member to take over position for 2011

Field Trips: Oct 22-24, trip to NY Canyon for minerals and fossils. Additional trips in the bulletin.

Federation: Need new Federation representative for the club who needs to attend 2 meetings per year (Directors Meeting during CFMS Show and the November Directors' Meeting in Visalia). The CFMS Show will be in Anderson in 2011.

Show Chairman: Magnetic signs for cars are available to advertise the Show. Members need to bring in old magazines on our hobby to give to visitors to the Show. Apex Catering will be providing food for the Show. Members need to sell raffle tickets – get a supply from Vicki Black. Exhibitors are still needed, contact Jon North.

Webmaster: Todd Lawson will take over from Jonathan in 2011.

Hospitality: Thanks to Melba for serving refreshments

Historian : No report

Picnic: No report

Program: October program – Exhibition cases presented by Jonathan North and Cleaning Minerals by Dan Chaplin

Continuing Business: Gladys Eckhardt still has a lot of rocks to get rid of, any club member interested give her a call.

New Business: Raffle tickets are on sale for the 2011 Camp Paradise drawing by CFMS. Tickets are \$5 each and Jonathan North will be again be selling them at the October meeting.

Meeting adjourned: 8:38pm

Respectfully Submitted,
Julie-Anne Lay, Secretary,
Nevada County Gem & Mineral Society

**Deadline for the November 2010
Newsletter is October 18, 2010**

Of Depth Perception and Dangerous Situations

By Owen Martin, AFMS Safety Chair

Well the weather has gotten hot and I've been out hunting a lot recently. On one of these trips I re-learned the lesson about knowing where you're going, making sure that you have the gear to get there, and more importantly—to get out.



As I like to tell my kids, “the easiest thing about climbing trees is getting down. The hardest thing is doing it without getting hurt.”

So there I was, standing alone on an old country bridge looking down 40 feet to the water. The creek was about 4 feet higher than normal, but the fringe of the bank still looked accessible—which meant I would have access to the fossil layer. So I attached my tag line and lowered my bucket and gear over the side to a little ledge that looked to be just above the water. Then I walked back around to access the bank and headed in. That's when I realized I had some problems that had started with bad depth perception.

Problem 1: I couldn't get down the way I have always done in the past because it was under water.

Problem 2: My bucket wasn't on the edge of the bank. It was actually about 5 feet up, and I couldn't get to it from higher up on the bank/cliff.

Problem 3: Where was my buddy Chase who was supposed to bring some better ropes?

Problem 4: The small amount of bank that was still exposed was actually a talus slope of shale that had just been “lubricated” by the creek.

Problem 5: You'll have to wait for...

So for Problem 1, I found a spot, used some old vines and roots to get as far down as possible, then jumped into about 8 inches of water + a few more of mud. Good thing I didn't twist anything! Remember the depth for future reference.

Problem 2: It wasn't too hard to handle except that I didn't want to go for a swim. When balancing on a precarious slope, adjusting your center of gravity upward isn't a good idea. Moving very carefully, I maneuvered the bucket down. I stayed dry to that point and found a little dry spot for my bucket and gear. Then I started working my way downstream. I used my tag line to steady myself as I scuttled along.

Problem 3: Where was Chase? About then he called and told me he couldn't come because his girlfriend's parents had just come into town and wanted to take him out to dinner. This was bad since I really needed some better

gear to haul my middle-aged butt back out of the creek!

Problem 4: “Man this footing is slick!” My tag line only helped for about 20 feet, and then it was just me, my mud boots, and my pick. I used the pick to dig out dry foot holds just above the water, and worked my way to the outcropping layer. I spent a good three hours there digging through the matrix and came away with my first mosasaur tooth. It was small with the very tip broken off, but I was still pretty happy. So, time to call it a day, and I could even be back in time for dinner.

That's when Problem 5 reached up (literally) and threw a wrench in my preconceived plans. Although there had not been any recent rain in the creek's watershed, the Brazos River had recently received several inches a couple of hundred miles upstream. So while I was in the creek, the Brazos continued to rise and water backed into the creek. I was facing the wall and didn't notice that the water had risen about a foot behind me!

So there I am at the bottom of the cliff, the fringe of the bank is now underwater AND I'm loaded down with matrix I want to take home. Well, I did make it out. Had to cut more steps which took a lot of work. Failed numerous times and fell in once while tossing my pick in the air. Luckily it missed me on the way down and landed where I could grab it. Otherwise, I WAS swimming back. Finally made it to the tag line and used it to haul myself about two feet up the bank. I secured it to my bucket and realized how hard it was to climb with two mud boots filled with muddy water. After partially emptying them (I must have looked like a crazed and muddy yoga master) I crawled the remaining 38 feet to the top. Yes—I was exhausted, and now all I had to do was drag that 50 lbs. of rock up from the bottom, and I could go.

The only smart thing I did in the whole process was to bring my wagon to the bridge. So I loaded it up and easily walked the quarter mile back to my Jeep. Then I headed home, very tired, but not bleeding (much) and without needing to go to an orthopedic surgeon the next day! I even used that change of clothes. All was good in the world until my hands cramped into a death grip on the steering wheel. I always take Motrin® with me, and that helped!

In retrospect, I put myself into a pretty dangerous situation and should have pulled out once I realized my hunting buddy wasn't going to show up. But since I had been to this spot several times before, I thought I could handle it. Maybe I did, just barely, or maybe since my Mom still prays for me every day I had a little help! Either way, I'm too old to do something that stupid. So I vow here and now to stop—at least until I need more fodder for my next article!

AFMS Newsletter, 9/2010



**CFMS
PRESIDENT'S MESSAGE**

Grow the Federation!

By Fred Ott

As was mentioned at the Directors Meeting this past June in Whittier, a motion to change our CFMS bylaws will be made at the November meeting in Visalia to help improve the process of accepting new societies into the CFMS.

The proposed change (if approved by the Directors) will allow the members of the Executive Committee the opportunity to review and approve applications for membership in the CFMS without having to wait (oftentimes for many months) until the next Directors meeting. This will be a small, yet significant, change in the way we can continue to **Grow the Federation**. The presence of your Society's CFMS Director at that meeting would be greatly appreciated.

Speaking of appreciation, I'd like to take a moment to recognize the great contributions that are being made on a daily basis by the men and women who hold positions of trust and responsibility in our Federation as officers, directors and chairpersons. Without their diligence, the Federation could hardly function as well as it does in support of our individual societies.

I believe that many individuals would be amazed at the activities that occur 'behind the scenes'. When the question "What does the Federation do for me?" is asked, it indicates a lack of awareness of the contributions made daily by those who have volunteered to chair (or serve on) one of the many CFMS committees. Just by accessing our Federation's website, cfmsinc.org, I counted over 50 individuals who have been donating their time and effort throughout 2010 in their respective committees to help our Federation function. They each deserve our 'thanks'!

Recently, a California State Senator had submitted proposed legislation to have **serpentine** removed as the State Rock of California. A "call to action" was made to each CFMS society and the response was impressive. Happily, the bill was defeated (at least for this year's session). Without the initiative of so many individuals, it's likely that the result could have been far different. Thanks to everyone for 'being involved'.

**Remember: rockhounding is MORE than a hobby;
it's a PASSION!**

Fred Ott, President 2010

From CFMS Newsletter, 10/2010

**CFMS FIELD TRIPS - NORTH
by Jonathan North**

I want to discuss some of the things you should consider before going on a field trip and things to keep in mind while on a trip. Field trips offered by your club or other clubs aren't always intended for everyone. Learn about a trip before deciding if it is what you really want to do.

When learning about a particular trip, be sure to find out what kind of terrain you will be entering. When a trip write-up says that vehicles with 4-wheel drive are required, don't even think about driving your low-to-the-ground 2-wheel drive vehicle. Requirements for a 4-wheel drive vehicle usually means the terrain may be steep, rocky, deep ruts, loose material and otherwise impassable by other kinds of vehicles. That doesn't necessarily mean you can't go on the trip, you may find someone to carpool with in the rough areas. Another consideration is whether you would be returning to where you left your vehicle.

When learning about a field trip, you need to see what kind of material you will be hunting. You may be able to collect rocks right on the surface while other material may need digging and in some cases, hard rock mining. A person's physical capability can be a major factor in this area. Make sure you have the correct tools to do the job. Often a rock pick and shovel are sufficient, while in some cases you may need picks, pry bars and heavy hammers. Can you drive up to the collecting site or must you hike in, and what about carrying your material back out?

Some field trips can be completed in a single day or may take longer. On overnight trips, the most important thing to consider is how you intend on spending your nights. Some areas are not far from a town and you can stay in a motel but there aren't always those kinds of accommodations. Do you have some way of camping out in the wild? The field trip leader should find a good location where attendees can camp, usually called a base camp. How you camp is your choice. An RV, camping trailer, a camper shell or a tent will work. Just have whatever you need to survive. Plenty food and water are a necessity. Clothing to survive any kind of weather is critical. In some areas, the weather can change abruptly. Remember that first aid kit too.

When you do go on that field trip, remember getting there is dependent upon your preparation. Be sure your vehicle is in good condition including tires. Spare parts like a spare tire, fan belts, oil and sufficient fuel are a must. Don't forget tools to fix problems.

Going on a field trip can be a lot of fun and rewarding. Just take care of the details before you head out and you will enjoy your trip and look forward to many more field trips in the future.

~ Jonathan

A "CO-OP MEMBER" FIELD TRIP TO FERNLEY, NV (date of publication 9/9/10)

- This trip is open to all rockhounds who agree to abide by the AFMS Code of Ethics, the directions of the field trip leader and practice safe rockhounding.
- Call the field trip leader beforehand to sign up and for further information.
- Remember to wear your name badge and sign in with the field trip leader.
- CO-OP website has information: www.ourfieldtrips.org (Password is needed).
- A Consent and Assumption of Risk Waiver of Liability form must be signed upon arrival at meeting site.

TRIP LOCATION – Areas in and around Fernley, Nevada

Vehicle Access and Parking # 6- good for most vehicles. Some sites 4wd or high clearance. Carpooling appreciated to access the more difficult areas (if we get to them). RV's OK some locations. Want to move around a bit and explore. No specific handicap parking.

Collection or View Site - # 1-7 Flat ground to ½ mile or more to sites. Potential exploration for additional sites that may involve steep hillsides, crossing a gulley or two.

WHEN – October 8, 9, & 10

SPONSOR CLUB – Sutter Buttes Gem and Mineral Society

LEADER & CONTACT INFO – Privacy item

MEMBER'S GUESTS - allowed

COLLECTION MATERIAL – agate, jasp-agate, opalite, rhyolite (some "picture" material was found on my recent visit which is not known to be associated with the area). Local calcite is also reported to fluoresce blue. Some of the other material may fluoresce green.

PROPOSED SCHEDULE - Arrive Friday night (potluck), begin collecting Saturday 10AM. Resume collecting Sunday 11AM, possible exploratory side trips. *Saturday night possible excursion to a buffet in Fernley before returning to camp.

MEET - Dayton State Park and Campground, Dayton, NV

DIRECTIONS TO SITE/CAMP - From Interstate 80 travel East through Reno, NV. Go 31 miles to the town of Fernley, NV, then South on Alt. 95 to Hwy 50. Travel West on Hwy 50 to Dayton State Park. From Hwy 50, continue through South Lake Tahoe to Carson City, NV. In central Carson City turn right off 395/50 and continue East on Hwy. 50 to the town of Dayton and the state park/campground. We will assemble there.

VEHICLE REQ'S – Providing the weather remains dry most vehicles should be able to manage dirt roads however high clearance and 4ws is preferred.

CAMP/FACILITIES – Dayton State Park/Campground, motels/hotels in region, RV parks and many places to eat in Fernley/Reno/Carson area.

TOOLS – rock hammer, sturdy rucksack, decent boots, sledge (material can be large boulders in excess of 50lbs).

SAFETY CONCERNS – use goggles and gloves. Watch for snakes, etc. Use protection from the sun.

A “CO-OP MEMBER” FIELD TRIP TO HAWTHORNE & MINA, NV AREAS (date of publication 8/31/10)

- This trip is open to all rockhounds who agree to abide by the AFMS Code of Ethics, the directions of the field trip leader and practice safe rock hounding.
- Call the field trip leader beforehand to sign up and for further information.
- Remember to wear your name badge and sign in with the field trip leader.
- CO-OP website has information: www.ourfieldtrips.org (Password is needed).
- A Consent and Assumption of Risk Waiver of Liability form must be signed upon arrival at meeting site.

TRIP LOCATION: Hawthorne, Mina, and New York Canyon areas, in Nevada.

TRIP DIFFICULTY RATING: The trip on Friday will absolutely require a 4x4 with a fairly experienced driver to get into the one primary site. The site parking and access otherwise is adjacent to the parking area.

Saturday and Sunday will require a High Clearance Vehicle, at the least, a 4x4 would be desirable for access on poorly maintained and rutted roads. Some sites may require an uphill climb on loose gravel and rubble and working around old mine sites. Vehicles should be equipped with a good spare tire, jack, and recovery equipment.

WHEN: Friday the 22nd, Saturday the 23rd and Sunday the 24th of October.

SPONSOR CLUB: Roseville Rock Rollers Gem and Mineral Society

LEADER & CONTACT INFO: Privacy item

MEMBER'S GUESTS: Allowed

COLLECTION MATERIAL: Microcline Feldspar, Copper minerals, Turquoise, Quartz Crystals, Epidote in Quartz, Epidote in Calcite, Fossils, and possible petrified wood.

PROPOSED SCHEDULE: Arrive Thursday night or early Friday morning in Hawthorne, NV. You may depart anytime on Sunday.

MEET: Friday, we will meet in the parking lot of the Casino in downtown Hawthorne at 8 AM, depart at 8:15. (There is only one main casino in Hawthorne on SR 95, can't miss it!) **Saturday and Sunday** meet at the Casino at 8:00 AM. depart at 8:15, meet at the Desert Lobster in Mina (west side of SR 95) at 8:45 and depart at 9:00 AM

DIRECTIONS TO SITE/CAMP: East Interstate 80 through Reno to SR 95 South to Hawthorne, Nevada. Drive time from Roseville should be around six hours!

VEHICLE REQ'S: Without knowing exactly who will be there and how much room they may have, you may wish to contact others going ahead of time to arrange for a carpool to certain sites if you do not have a suitable vehicle. High clearance is necessary at the least on Saturday and Sunday. You must start with a full tank of fuel each day! Allow time for vehicle maintenance prior to the 8:15 Departure.

CAMP/FACILITIES: There are several hotels and motels in Hawthorne. The nicest is the Best Western on the East end of town. The Desert Sands is a little less expensive, as is the Casino Hotel. There is an RV park for those wishing to tent or RV camp. There is plenty of BLM land in the area for those who are roughing it. Contact the Chamber of Commerce for Hotel and RV contact information. The Sunrise Rise Valley RV Park in Mina (south edge of town, on SR 95) will be used by several rockhounds. Call (775) 573-2214 as reservations are encouraged. Full hookups, rates: \$23 + tax for two, \$3 extra per person at each site.

TOOLS: Shovels, rock picks, hand sledges and cold chisels. Collection bags, goggles, pry bars. Zip lock bags and paper towels for delicate specimens should you find some!

SAFETY CONCERNS: This is tough and dirty rock hounding! Bugs, snakes, holes, mine shafts, nails, barb wire, and heaven knows what else is out there! This one is for the tough guys and gals, but it will be a great adventure.

CLIMATE/WEATHER: Weather should be nice at this time of year. Rain or snow will limit our number of collections sites but should not shut us down. We could get late season hot spell, so bring lots of extra water and check ACCU-WEATHER for long range and departure weather for “Hawthorne, Nevada”

CLOTHING: No flip flops or open toed shoes. Bring layered clothing with you, in the car, not in your hotel room.

OTHER REMARKS: The Friday site is a private mine site, and ownership is in a state of flux. We have tentative approval to check this site for materials in the tails, but not to actually mine the wall for Amazonite. We will need to respect the mine owner's wishes on this and refrain from any return high grading trips.

CFMS 2010 SHOWS

October 2-3 2010, Oroville, CA

Feather River Lapidary & Mineral Society
Oroville Municipal Auditorium
1200 Meyers Street
Hours: 10 - 5 Daily
Connie Rossetto (530) 589-1840
Email: crossetto@aol.com
Website: <http://www.OrovilleRocks.com>

October 9-10 2010, Grass Valley, CA

Nevada County Gem & Mineral Society
"Earth's Treasures"
Nevada County Fairgrounds
11228 McCourtney Road
Hours: 10 - 5 Both Days
Kim Moore (530) 470-0388
Email: kmoore160@comcast.net
Website: <http://www.ncgms.org>



October 16-17 2010, Placerville, CA

El Dorado County Gem & Mineral Society
El Dorado County Fairgrounds
100 Placerville Drive
Hours: 10-5 daily
Karen Newlin (530) 676-1643
Website: <http://www.rockandgemshow.org>

October 16-17 2010, Santa Rosa, CA

Santa Rosa Gem & Mineral Society
Veterans Memorial Auditorium
1351 Maple Ave
Hours: Sat. 10-6: Sun 10-5
Debbie Granat (707) 542-1651 - Cell (707) 887-7028
Email: Erica Tanner santarosarock-show@hotmail.com



October 23-24 2010, Los Altos, CA

Peninsula Gem & Geology Society

Los Altos Youth Center
1 North San Antonio Road
Hours: 10-5 both days
Website: <http://pggs.org/>



November 6-7 2010, Concord, CA

Contra Costa Mineral & Gem Society
Centre concord (in Clayton Fair Shopping Center)
5298 Clayton Rd. (near Ygnacio Valley Rd.)
Hours: 10-5 both days
harry Nichandos (925) 289-0454
Email: show9@ccmgs.org

From CFMS Website September 2010

Agate Cutting Tips

Agates can be cut and polished on diamond, but we prefer to use carborundum -grinding wheels and polish with cerium oxide on hard felt. You can also use leather or poly-pads. Try a little red rouge when polishing. It seems to give a more glassy finish. One thing to remember is to get rid of all scratches from the grinding stage with a 600 sanding disk or belt.

From The Lithnics, April 2000, via RockCollector 2/01

CO-OP MEMBER & OTHER FIELD TRIPS FOR 2010

- | | |
|--------------------|--|
| Oct. 2 | Griffith Quarry, Penryn, CA for a tour of the quarry, Lincoln Hills Club, Ron Clawson |
| Oct. 9, 10 | Fernley, NV for various minerals, Sutter Buttes Club, Gerry Hill |
| Oct. 16 | Rare Rock Mosaic Art Museum, Santa Rosa, CA, Oroville Club, Charlee Ann Lewis |
| Oct. 22- 24 | New York Cyn., NV for epidote, copper, minerals, microcline, RRR Club, Jim Hutchings |
| Nov. 7 | Black Butte Reservoir for jasper, El Dorado Co. Club, Ron Stone |
| Nov. 24-28 | Afton Canyon, Basin Rd., CA for agate, jasper, fluorite, aragonite, seginite, onyx, etc., Mother Lode MS, Al Troglin |

12th version, August 31, 2010, CO-OP



RELIABLE RV

530-272-4858
530-272-6950

13368 Grass Valley Avenue
Grass Valley, CA 95945

PARTS SERVICE STORAGE



Nevada County Gem & Mineral Society



2010 ELECTED OFFICERS

PRESIDENT	Jan Longacre
VICE PRESIDENT	Dan Chaplin
SECRETARY	Julie-Anne Lay
TREASURER	Todd Lawson
DIRECTORS	Kim Moore
	Snakes Hoffmann
	Terry Bartels

2010 COMMITTEE CHAIRPERSONS

FEDERATION DIRECTOR	Jonathan North		
FIELD TRIP DIRECTORS	Vicki Black		
	Tony Kampitch		
HISTORIAN	Emma Lay		
HOSPITALITY	Melba Sagaser		
LIBRARIAN	Alex Lay		
MEMBERSHIP	Jonathan North		
PARLIAMENTARIAN	Vacant		
CLUB PICNIC	Anita Wald-Tuttle		
JUNIOR PROGRAM CHAIRMAN	Jennifer Wren		
JUNIOR PROGRAM ASST.	Melba Sagaser		
PROGRAM	Dan Chaplin		
PUBLICITY	Robert & Joyce Emerson		
	Kim Moore		
REFRESHMENTS	Birthday Honorees		
SHOW CHAIRMAN	Kim Moore		
SHOW CHAIRMAN, ASSISTANT	Marty Patton		
SHOW DEALER CHAIRMAN	Joyce Emerson		
SUNSHINE	Mary Tucker		
NEWSLETTER EDITOR	Jonathan North	(916) 768-0137	jonnorth@comcast.net
	1440 Musgrave Dr. Roseville, CA 95747-6257		
WEBMASTER	Jonathan North	(916) 768-0137	http://www.ncgms.org/

Nevada County Gem & Mineral Society Meetings

The Nevada County Gem and Mineral Society holds two meetings every month with certain exceptions. The membership is informed of exceptions during meetings and through Rock Writings. You are welcome to attend any meeting.

Executive Committee Meeting:

First Tuesday of the month, 6:00 p.m.
Golden Empire Grange Building
11363 Grange Ct., Grass Valley, CA

Tues. Oct 5th, 2010

General Membership Meeting:

First Tuesday of the month, 7:00 p.m.
Golden Empire Grange Building
11363 Grange Ct., Grass Valley, CA

Membership Dues: Yearly membership dues for NCG&MS are \$20.00 for singles and \$25.00 for families. For more information or an application, contact Membership Chairman Jonathan North (916) 768-0137. *Deduct \$5.00 if you receive your newsletter via email*

NCG&MS is a non-profit organization that has these objectives:

- ♦ to promote the study of mineralogy, geology and fossils.
- ♦ to encourage the collection of minerals and gems.
- ♦ to foster the study and practice of the lapidary arts.
- ♦ to provide field trips to mineral localities.
- ♦ to promote good fellowship, education and recreation.



NEVADA COUNTY GEM AND MINERAL SOCIETY IS A PROUD MEMBER OF:
AMERICAN FEDERATION OF MINERALOGICAL SOCIETIES, INC. (AFMS)
CALIFORNIA FEDERATION OF MINERALOGICAL SOCIETIES, INC. (CFMS)



PERMISSION TO REPRINT ARTICLES IS GRANTED IF CREDITS ARE GIVEN.
ARTICLES WITH NO CREDITS ARE WRITTEN BY THE EDITOR, JONATHAN NORTH
Please send Exchange Newsletters & Newsletter Submissions to: Jonathan North, Editor
1440 Musgrave Drive, Roseville, CA 95747-6257 or Email: jonnorth@comcast.net



First Class Mail



October 2010



General Membership Meeting

**Tuesday, October 5, 2010
7:00 p.m.**

**Golden Empire Grange
11363 Grange Ct., Grass Valley**

October Program

**Setting up an Exhibit Case
by Jon North
Cleaning Minerals
by Dan Chaplin**

**** Bring a Friend! ****

Nevada County Gem & Mineral Society Present

Earth's Treasures

2010

Sat. & Sun. October 9th & 10th, 2010
10:00 AM TO 5:00 PM

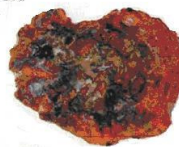
39th Annual Show

**Exhibits of Rocks, Minerals,
Carved & Faceted Stones**

SPECIAL PETRIFIED WOOD DISPLAY

Mineral Identification
Half Hourly Prizes
Jewelry Sales
Demonstrations

Childrens' Games
Silent Auctions
Mineral & Fossil Sales
Lapidary Equipment Sales



Raffles and door prizes

Admission: Adults \$2.00 Children FREE
Plenty of Free Parking
YOTMC Breakfast Sunday

The Nevada County Fairgrounds • Main Exhibit Hall
11228 McCourtney Road • Grass Valley, CA
Show chair person: Kim Moore 530-470-0388
Dealer chairperson: Joyce Emerson 503-559-2595