

# ROCK WRITINGS

Official Monthly Publication of the Nevada County Gem & Mineral Society

Volume 44, Number 6

Nevada City - Grass Valley, California

June 2010

## President's Message by Jan Longacre

I went to Nevada with Vicki's field trip. It was so fun!! First time I'd been on a club trip in so many years. Was a great time had by all I think. Saturday I turned in early, but Sunday was great. The weather couldn't have been better. A couple of people had flat tires, I got one after I got home. There were a couple of grumpy snakes, but everyone gave them space! I'm looking forward to going again. That's it for now. Don't forget the potluck and auction this month, bring something good. I have a big box of plastic utensils and will get paper plates, but if someone wants real dishes please bring your own.



Jan

## Junior Rockhounds Meetings

The Junior Rockhounds met May 4th at the Grange Hall with 5 members present: Jake, Sam, Trinity, Josie & Anna. Each member got a shoulder bag containing a diary, pen and a fossil bookmark.

We also received information on how the badge program works and how to earn them. After the meeting we were excited to attend a few minutes with the adults and get our name drawn by Terry for a very special rock."

Melba Sagaser

## June Calendar of Events

June 1	Board Meeting 6 p.m.
June 1	General Membership Meeting 6:30 p.m.
June 12-13	CFMS Field Trip to Austin, Nevada
June 14	Flag Day
June 18-20	AFMS/CFMS Gem Show 2010
June 20	Father's Day
June 21	First day of Summer

## June's Program is a Potluck and Live Auction

Time for a change of pace. We are having a potluck starting at 6:30 p.m. and then our program will be a live auction conducted by our very own auctioneer, Bill Sagaser!

For the Potluck: please bring a main dish or dessert for the potluck. If you can't make something, you can pick up something like rolls or chips, etc. Even if you don't bring anything, bring yourself... there is always plenty for everyone. Also, bring your dishes and silverware.

For the auction: items to be auctioned come from the members and proceeds go to our Club General Fund. Please bring something you can part with and money to win something you can't live without.



**AFMS/CFMS  
Gem Show 2010**



*La Habra*  
2010

- Gems
- Fossils
- Jewelry
- Supplies
- Grab Bags
- Kid's Room
- Silent Auction
- Display Cases
- Raffle Prizes
- Field Trips & more

### HIDDEN TREASURES

**June 18-20, 2010  
Fri-Sun 10am-5pm**

So. CA Univ. of Health Sciences Campus  
16200 E Amber Valley Rd., Whittier, CA 90604

Host: North Orange County Gem & Mineral Society  
Show Chairman: Mike Beaumont (714-510-6037)  
Email: [diamond.crest@yahoo.com](mailto:diamond.crest@yahoo.com)  
Website: [NetworkingWave.com/AFMS2010/](http://NetworkingWave.com/AFMS2010/)

# June Birthdays!

Jun 03 – Anita Wald-Tuttle  
 Jun 03 – Penny Renicker  
 Jun 10 – Renate Patton  
 Jun 14 – Mary Tucker  
 Jun 25 – Anita Tucker  
 Jun 27 – Ed Boyer  
 Jun 29 – Dennis Wren



## Last Month's Program

Vicki Black showed lots of slides of some of the field trips that she and club members went on for rocks, minerals and fossils and some of our club picnic last year. In addition to the slides, there were some specimens provided by Vicki and others that that collected on the trips.

Vicki also talked about some of the upcoming field trips. Thank you Vicki for the great program!

Deadline for the July 2010  
Newsletter is June 22, 2010



## Sunshine Update



Nothing new to report this month...hope everyone is getting along okay.

Mary Tucker is our Sunshine reporter. Mary would like any news you would like to share with our members reported to her by calling (530) 265-8320 or you can also contact Jonathan North, editor at (916) 768-0137.

## June's Birthstone's are Alexandrite, Moonstone and Pearl

Those of you that were born in June have something that those born in other months don't. You have three birthstones to choose from. Each one is elegant in its own way.

### Alexandrite

Alexandrite is a transparent chrysoberyl. A unique quality of alexandrite is its special optical effects. In daylight, it is grass-green or emerald color, but changes to wine-red or brownish-red when exposed to an incandescent light. Gems that have this characteristic are called phenomenal stones. Alexandrite was first found in the Ural Mountains in Russia in the early 1800s. The stone was named for Prince Alexander who later became Alexander II. Alexandrite primarily comes from Brazil and Sri Lanka. It is also found in Burma, Tanzania, and Zimbabwe. Chrysoberyl has a hardness of 8½, cleavage is good in one direction and poor in two others. It has a vitreous luster and streaks white. Alexandrite is quite expensive because of its qualities and rarity.



### Moonstone

Moonstone is a translucent to transparent alkali feldspar. It got its name from the Romans, who believed that it was formed out of moonbeams. Moonstone has a shimmering glow to it that is caused by two different types of feldspar that have different refractive indexes.

Moonstones come in a variety of colors, ranging from blue, gray, pink, green, brown and yellow. It can also be colorless or even rainbow colored. The best quality moonstones have a blue sheen, perfect clarity, and a colorless body color. Moonstone has a hardness of 6 - 6½. Its cleavage is good in two directions at 90°. Its luster is vitreous, and it streaks white. Moonstone is found in many locations of the United States. Other areas it can be found are Sri Lanka, Southern India, and Madagascar.



### Pearls

Pearls are considered a gemstone, however they come from a much different origin. They are extracted from oysters. A pearl is formed when a foreign body like a grain of sand becomes lodged inside the oyster. The oyster coats the object with many layers of a pearly substance, called nacre, to ease irritation. Today, most pearls are cultured, meaning that the pearl is started by someone inserting something into the oyster. Pearls come in a variety of colors like silver, silver pink, silver white, and black. Pearls are graded according to size, shape, luster, color, orient and surface perfection. Pearls come from oysters around the world, however many of the tropical islands are renowned



By Jonathan North

**Nevada County Gem & Mineral Society  
Board Meeting Minutes  
May 4, 2010**

**Meeting called to order by** President Jan Longacre at 6:10 pm

**Members present:** Terry Bartels, Vicki Black, Dan Chaplin, Joyce Emerson, Snakes Hoffman, Todd Lawson, Julie-Anne Lay, Jan Longacre, Jonathan North

**Minutes from April Board meeting:** Accepted as printed in bulletin

**Treasurer's Report:** April raffle made \$52. Statement of information filed with the State. Board approved payment of expenses for juniors and hospitality.

**Correspondence:** Board voted to not sponsor the 4th of July parade this year.

**Committee Reports:**

**Membership:** Rosters distributed. No new applications.

**Bulletin:** Need stories from members.

**Field Trips:** Club co-op trip to Majuba Mountain May 15/16<sup>th</sup>. All trip information in bulletin and on fliers for members to pick up. Jon North is leading CFMS trip to Austin, NV in June.

**Federation:** AFMS/CFMS show in southern California June 18-20th

**Historian:** Need 2009 photos and articles.

**Show Chairman:** Contracts out. Have a full house. Fliers are being printed.

**Webmaster:** Received an e-mail from a lady wanting to know how to clean quartz, Jon invited her to the meeting to ask the experts.

**Picnic:** No report

**Program:** Next month auction/ potluck

**Continuing Business:** None

**New Business:** Gladys Eckhardt is selling a sphere machine with some unfinished spheres for \$1200. She also wants to sell some of her rough rocks, the club will see if it would be possible to have a trip there the same day as the picnic. Joyce Emerson got a donation of jewelry findings which can be used to make items for the show and used in the junior program. Cliff Swensen wrote to the club with a good suggestion, recommending new members be introduced to members who could share information in their area of interest such as lapidary, gold panning or tumbling.

**Meeting adjourned:** 6:50 pm

Respectfully Submitted,  
Julie-Anne Lay, Secretary,  
Nevada County Gem & Mineral Society

**Next CO-OP Meeting  
Sunday, August 15, 2010  
Coco's Family Restaurant  
7887 Madison Ave.  
(NW corner of Sunrise Blvd./Madison)  
Citrus Heights, CA**

**Nevada County Gem & Mineral Society  
General Meeting Minutes  
May 4, 2010**

**Meeting called to order by** President Jan Longacre at 7:10 pm

**Pledge of Allegiance**

**Attendance:** 36 members and 3 guests

**Sunshine:** No report

**Birthdays:** Happy Birthday to all the May birthdays

**Juniors:** Juniors rockhounds had first meeting tonight. 5 members present. Melba Sagaser made collecting bags with notebooks and information for all 12 junior members. Field trip May 22<sup>nd</sup> to Colfax to see the Sagaser's and Terry Bartel's rock collections.

**Program:** Vicki Black with a slideshow on recent field trips.

**Minutes from April Board meeting:** accepted as printed in the bulletin

**Treasurer's Report:** Accounts healthy

**Correspondence:** Nevada City Chamber of Commerce requested sponsorship for the July 4<sup>th</sup> parade. The Board voted not to contribute at this time.

**Committee Reports:**

**Membership:** Roster available – let Jonathan know if there are any corrections.

**Bulletin:** Need stories from members for the newsletter

**Field Trips:** Majuba Mountain Trip May 15/16<sup>th</sup> led by Vicki Black. Jonathan North is leading trip to Austin, NV in June. Other trips all in bulletin.

**Federation:** AFMS/ CFMS show June 18-20<sup>th</sup> in southern California.

**Show Chairman:** Dates Oct 9<sup>th</sup>/10<sup>th</sup>. Contracts are out. All vendor places are full. Fliers are being printed

**Webmaster:** Check the club website to see what's new.

**Hospitality:** Thanks to Melba and Snakes

**Historian:** Need photos from 2009 events. Old club albums at meeting for members to take a look.

**Picnic:** July 10<sup>th</sup>, 2-5 pm

**Program:** Next month pot luck and auction. General meeting will start earlier at 6:30pm. Bring donations.

**Continuing Business:** Snyder's Pow Wow May 7-9<sup>th</sup>.

**New Business:** Gladys Eckhardt is selling a sphere machine for \$1200 and is wanting to sell the rock piles in her yard. The club will try and arrange a trip to her house before the July picnic.

**Meeting adjourned:** 8:30 pm

Respectfully Submitted,  
Julie-Anne Lay, Secretary,  
Nevada County Gem & Mineral Society



**Father's Day  
June 20th**



**CFMS PRESIDENT'S MESSAGE****Grow the Federation!  
By Fred Ott**

Grow the Federation!

The combined AFMS/CFMS Show, hosted by the North Orange County Gem and Mineral Society, is 'just around the corner', June 18th, 19th and 20th in Whittier, California.

It's very important that your society's CFMS Director (or his/her alternate) attends the Directors meeting on Saturday, June 19th. This is one (of only two) opportunities each year that society representatives have to meet face-to-face with other Directors and share ideas and conduct the business of the Federation.

In the past, there have been occasions where a quorum was barely achieved because of poor attendance. Without a quorum, much of the business of the Federation cannot be conducted so please make every effort to attend the Directors meeting!

One of the items to be discussed at the Directors Meeting (as well as the Cracker Barrel) will be a proposal to change the bylaws with regards to applications for membership in the Federation. Currently, an application received (as an example) in December isn't submitted for a vote until the next Directors meeting (which can be up to 6 months hence). Such a lengthy delay causes a myriad of problems which can better be addressed by having applications reviewed by the Executive Committee (via email) in a much more timely manner.

No vote will be taken at the June Directors meeting as the protocol to officially consider such a change requires a formal notification process nonetheless, it will be important to discuss this issue and other matters in an effort to continually improve the efficiency of our Federation.

I hope to see you there!

**Remember: rockhounding is MORE than a hobby; it's a PASSION!**

- Fred Ott, President 2010

CFMS Newsletter, June 2010

**CO-OP MEMBER & OTHER FIELD TRIPS  
FOR 2010/2011**

- June 12, 13** Austin, NV for Green and Purple fluorite, Snakeskin agate, and Blue chalcedony. CFMS Field Trips North, Jon North (See details on page 6)
- June 13** Benitoite, Fee Dig, north of Coalinga, CA, Santa Cruz and Santa Clara Valley Clubs, Dean Welder
- June 20** Spider Mine for rhodonite (fee dig), San Francisco G & M Society, Barb Matz
- July 23,24,25** Davis Creek, CA for obsidian, Sacramento Mineral Society, Joe Shook.
- Sept. 4, 5, 6** Austin, NV for fluorite, snakeskin agate, other minerals El Dorado Co. Club, Barbara Terrill
- Oct. 2** Griffith Quarry, Penryn, CA for a tour of the quarry, Lincoln Hills Club, Ron Clawson
- Oct. 9, 10** Fernley, NV for various minerals, Sutter Buttes Club, Gerry Hill
- Oct. 23, 24** New York Cyn., NV for epidote, copper, minerals, microcline, RRR Club, Jim Hutchings
- Nov. 7** Black Butte Reservoir for jasper, El Dorado Co. Club, Ron Stone
- Nov. 24-28** TBA, Mother Lode MS, Al Troglin
- Jan. 5-22, 2011** Tanzania, East Africa for sapphires, other gems & minerals. North Bay Field Trips, Contra Costa Mineral & Gem Society, Dennis Freiburger. (For contact information, contact your club's field trip leader or editor.)



5th version, May 21, 2010, Co-Op



## A Field Trip to Fallon, Nevada for Fossils



The Trip to Fallon, Nevada in April for leaves was great. 33 people from 10 different clubs joined us and we headed out into the Dead Camel Mountains. We all were able to collect the 10 million year old fossil leaf imprints on rhyolite. On Sunday we went to a Diatomaceous shale pit owned by the Eagle Pitcher Mining co. We had permission and a guide from the company to show us around and everyone was able to find many small Stickleback fish fossils. Everyone got some good specimens and had a great time.



Next month: Look for a report and photos of the Field Trip to the Majuba Mine and 56 Copper Mine, Inlay, Nevada.

Photos by Vicki Black



**CFMS FIELD TRIPS - NORTH****Austin Nevada Area****By Jonathan North**

Last month I presented the initial information about the upcoming field trip to Austin, Nevada. Here it is again with modifications, primarily concerning the

camping accommodations.

**WHERE:** Austin, Nevada Area

**TRIP DIFFICULTY RATING SCALE**

**Vehicle Access & Parking:** #4, vehicle access and parking good for most vehicles and RV's, no specific handicap parking.

**Collection or view Site:** #5, 2 wheel, vehicle parking on rough terrain or trail end.

**WHEN:** June 12-13, 2010 with June 11 as a travel day.

**SPONSOR:** California Federation of Mineralogical Societies (CFMS) Field Trips North  
**PARTICIPANTS:** Open to all CFMS members and guests.

**COLLECTION MATERIAL:** Green and Purple fluorite, Snakeskin agate, and Blue chalcedony. Note: Fluorite collecting area is private property. Owner doesn't mind collecting if it is done responsibly and area is left in good condition.

**LEADER & CONTACT INFO:** Jonathan North (916) 768-0137, [jonnorth@comcast.net](mailto:jonnorth@comcast.net). If you plan on going on this field trip, contact Jonathan North in advance so he has an idea of how many will be attending.

**PROPOSED SCHEDULE:** Waiver sign-ins will be at 7:30 a.m. and trips start at 8 a.m. Saturday morning: Drive to Fluorite area and dig for Fluorite in tailing piles, lunch, drive to Snake Skin agate area (no digging required). Sunday morning: Drive to Mt. Aerie area and collect Blue chalcedony in alluvial slopes (no digging required). Mt. Aerie area is on the way home.  
**CAMPSITE/MEETING LOCATION:** Camping at the collecting site is not suitable for RVs and trailers; therefore, another camping area has been designated. Take Hwy 305 north off Hwy 50 just before Austin, NV. Travel 14 miles north on Hwy 305 and go left off highway and down a short incline to a large gravel quarry used by the Department of Transportation. A sign will be posted at the turnoff. The field trips will begin from this camping area after sign-in is complete. Motels and RV parks are available in Austin, NV,

however you will need to be at the designated camping area to sign in for field trips.

**VEHICLE REQUIREMENTS:** Most areas are 2WD accessible, although care should be used in some areas where clearance could be a problem. Carpooling is encouraged to cut down on number of vehicles at collecting sites. A full tank of fuel is a must. Best place to get fuel is in Fallon, but it is available in Austin if needed.  
**CAMP/FACILITIES:** There is sufficient room for any kind of RV. This is dry camping with no facilities.

**TOOLS NEEDED:** Easy digging tools like shovels, and hand tools.

**SAFETY CONCERNS:** Rocky and hilly in collecting areas, watch for snakes and other critters.

**CLIMATE/WEATHER:** Being a high desert area, it could be hot in the daytime and cold at night. Rain is unpredictable.

**CLOTHING:** Bring something for any kind of weather.

**OTHER REMARKS:** You must observe CFMS/AFMS Code of Ethics and sign a consent and assumption of risk waiver of liability form. Don't forget water, and food. We hope to have a potluck dinner on Saturday. Be aware that this is a remote and undeveloped area. Collect responsibly. Please help preserve our collecting areas and pack out what you pack in. Let's leave it clean for future Rockhounds.

- Jonathan

---

### Local Field Trip Same Day as Picnic

Here's a chance to collect some nice rocks from places that are no longer open to rockhounds or haven't been visited by many for many years. Our club has been invited to go to an old member's house and collect from their rock piles. Ben and Gladys Eckhardt were long time members and Ben passed away a year ago and Gladys needs some help. They were active rockhounds and collected beautiful rock from all over. This will be a fee dig with a fee of \$10.00 for a 5 gallon bucket, bring your own bucket.

We have set up the day and times to go to Gladys's house: July 10th from 10 a.m. to 1 p.m.

This is the day of our picnic so what a great way to spend the day rock collecting and a great get together afterwards.

Gladys lives at a location that only members can find out. Where it is. It is on the right hand side of the road. A small redwood house. She will have a sign out on the road too.

This is a great chance to get some beautiful rocks.

## A Day at Snyder's Pow Wow in Valley Springs

LaVelle and I spent a day at the Valley Springs Pow Wow (buying slabs and rough mostly) on Sat, 5/8/10. It was a great day, zillions of people, but we saw no one from either my old club (Peninsula Gem & Geology Soc) or the Grass Valley club. LaVelle bought a very nice foot-high amethyst vug specimen (see pictures), one of many that were selling for between \$20 and up (\$200 for the 4 footers), amazingly low prices! As usual, there were over 200 vendors, crowded parking, tons of slabs and cabs, chiggers, RC model airplanes, but no Indian dancers this time. It did rain on Sunday but by then we had moved over to the Jackson Rancheria casino to help the Indians a little with their economy. Actually, we had helped the economy at the Pow Wow a lot more.

- Bill Budd



*Photos by Bill Budd & LaVelle Stsnton*

***Valley Springs Pow Wow, May 8, 2010***

# CFMS 2010 SHOWS

**June 4-6 2010, Woodland Hills, CA**  
 Rockatomics Gem and Mineral Society  
 Pierce College  
 6201 Winnetka Ave., Woodland Hills  
 Hours: 9-5  
 Gary Levitt (818) 993-3802  
 Email: [Show@Rockatomics.org](mailto:Show@Rockatomics.org)  
 Website: [Rockatomics.org](http://Rockatomics.org)

**June 5-6 2010, Glendora, CA**  
 Glendora Gems  
 Goddard Middle School  
 859 East Sierra Madre  
 Hours: Sat. 10-5; Sun. 10-4  
 bonnie Bidwell (626) 963-4638  
 Email: [Ybidwell2@aol.com](mailto:Ybidwell2@aol.com)

**June 18-20 2010, Whittier, CA**  
 AFMS/CFMS Show and Convention  
 Hosted by North Orange County Gem and Mineral Society  
 So. CA University of Health Sciences Campus  
 16200 E. Amber Valley Rd., Whittier CA  
 Hours: 10-5 daily  
 Don Warthen (626) 330-8974  
 Email: [odwarthen@verizon.net](mailto:odwarthen@verizon.net)  
 Website: [www.nocgms.com](http://www.nocgms.com)

**June 19-20 2010, Cayucos, CA**  
 San Luis Obispo Gem & Mineral Club  
 Cayucos Vets Hall (next to Cayucos Pier)  
 10 Cayucos Drive  
 Hours: 9-5 Daily  
 Mike Lyons (805) 610-0757  
 Email: [jadestar@charter.net](mailto:jadestar@charter.net)  
 Website: <http://www.slogem.org/>

From CFMS Website June 2010

	<b>RELIABLE</b>
	<b>RV</b>
	530-272-4858
	530-272-6950
<b>PARTS</b>	13368 Grass Valley Avenue
<b>SERVICE</b>	Grass Valley, CA 95945
<b>STORAGE</b>	

## Safety

By Bural LaRue, CFMS Safety Chairman

### Bee Alert, Bee Prepared!

Flowers everywhere are blooming and attracting bees in large numbers. This is the time of year to be especially alert to large numbers of bees appearing to set up housekeeping near areas of activity. The Africanized honey bee (AHB) and the European honey bee look the same. Both species protect their nest and sting. Their venom is the same and they can sting only once. Both species are beneficial in that they pollinate flowers and produce honey and wax.

Why the concern? The Africanized variety is much more aggressive than its European cousin and poses a far greater threat to people and their pets. When disturbed, they respond quickly and sting in large numbers. They have been known to pursue their enemy ¼ mile or more. They can sense a threat from people and animals 50 or more feet from their nest and can sense vibrations from power equipment 100 feet away. They swarm frequently to establish new nests.

Nesting sites for the Africanized honey bee include empty boxes, cans, buckets or other containers, old tires, lumber piles, holes and cavities in fences, trees or the ground. They will also nest in sheds, garages, and other buildings. Remove potential nest sites around buildings. Be careful wherever bees may be found.

To keep bees away, wear light-colored clothing and avoid scented soaps and perfumes. Don't leave food, drinks, and garbage uncovered.

Don't pen, or tether animals near bee hives or nests and never attempt to remove a nest yourself. Find a reputable pest control company that specializes in bee removal. Check with your local extension office or the State Department of Agriculture and Consumer Services for trained and licensed pest control operators in your area.

(To be continued in next newsletter)

Source: Riverside County Open Spaces District handout

-Bural

CFMS Newsletter, June 2010





## Nevada County Gem & Mineral Society



### 2010 ELECTED OFFICERS

<b>PRESIDENT</b>	Jan Longacre
<b>VICE PRESIDENT</b>	Dan Chaplin
<b>SECRETARY</b>	Julie-Anne Lay
<b>TREASURER</b>	Todd Lawson
<b>DIRECTORS</b>	Kim Moore Snakes Hoffmann Terry Bartels

### 2010 COMMITTEE CHAIRPERSONS

<b>FEDERATION DIRECTOR</b>	Jonathan North		
<b>FIELD TRIP DIRECTORS</b>	Vicki Black Tony Kampitch		
<b>HISTORIAN</b>	Emma Lay		
<b>HOSPITALITY</b>	Melba Sagaser		
<b>LIBRARIAN</b>	Alex Lay		
<b>MEMBERSHIP</b>	Jonathan North		
<b>PARLIAMENTARIAN</b>	Vacant		
<b>CLUB PICNIC</b>	Anita Wald-Tuttle		
<b>JUNIOR PROGRAM CHAIRMAN</b>	Jennifer Wren		
<b>JUNIOR PROGRAM ASST.</b>	Melba Sagaser		
<b>PROGRAM</b>	Dan Chaplin		
<b>PUBLICITY</b>	Robert & Joyce Emerson Kim Moore		
<b>REFRESHMENTS</b>	Birthday Honorees		
<b>SHOW CHAIRMAN</b>	Kim Moore		
<b>SHOW CHAIRMAN, ASSISTANT</b>	Marty Patton		
<b>SHOW DEALER CHAIRMAN</b>	Joyce Emerson		
<b>SUNSHINE</b>	Mary Tucker		
<b>NEWSLETTER EDITOR</b>	Jonathan North	(916) 768-0137	<a href="mailto:jonnorth@comcast.net">jonnorth@comcast.net</a>
	1440 Musgrave Dr. Roseville, CA 95747-6257		
<b>WEBMASTER</b>	Jonathan North	(916) 768-0137	<a href="http://www.ncgms.org/">http://www.ncgms.org/</a>

### Nevada County Gem & Mineral Society Meetings

The Nevada County Gem and Mineral Society holds two meetings every month with certain exceptions. The membership is informed

#### **Executive Committee Meeting:**

First Tuesday of the month, 6:00 p.m.  
Golden Empire Grange Building  
11363 Grange Ct., Grass Valley, CA

**Tues. June 1, 2010**

#### **General Membership Meeting:**

First Tuesday of the month, 7:00 p.m.  
Golden Empire Grange Building  
11363 Grange Ct., Grass Valley, CA

**Membership Dues:** Yearly membership dues for NCG&MS are \$20.00 for singles and \$25.00 for families. For more information or an application, contact Membership Chairman Jonathan North (916) 768-0137. \*Deduct \$5.00 if you receive your newsletter via email\*

#### **NCG&MS is a non-profit organization that has these objectives:**

- ♦ to promote the study of mineralogy, geology and fossils.
- ♦ to encourage the collection of minerals and gems.
- ♦ to foster the study and practice of the lapidary arts.
- ♦ to provide field trips to mineral localities.
- ♦ to promote good fellowship, education and recreation.



NEVADA COUNTY GEM AND MINERAL SOCIETY IS A PROUD MEMBER OF:  
AMERICAN FEDERATION OF MINERALOGICAL SOCIETIES, INC. (AFMS)  
CALIFORNIA FEDERATION OF MINERALOGICAL SOCIETIES, INC. (CFMS)



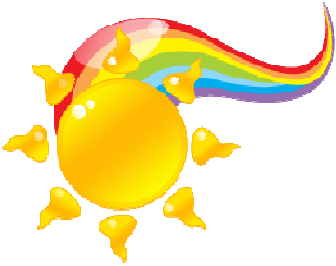
PERMISSION TO REPRINT ARTICLES IS GRANTED IF CREDITS ARE GIVEN.  
ARTICLES WITH NO CREDITS ARE WRITTEN BY THE EDITOR, JONATHAN NORTH

**Please send Exchange Newsletters & Newsletter Submissions to: Jonathan North, Editor**  
1440 Musgrave Drive, Roseville, CA 95747-6257 or Email: [jonnorth@comcast.net](mailto:jonnorth@comcast.net)



Nevada County Gem & Mineral Society  
PO Box 565  
Nevada City, CA 95959-0565

First Class Mail



Summer— June 21st!



*June 2010*

## General Membership Meeting

Tuesday, June 1, 2010

7:00 p.m.

Golden Empire Grange  
11363 Grange Ct., Grass Valley



## April Program

**"A Potluck followed by a live Auction with  
Auctioneer Wild Bill Sagaser"**



**\*\* Bring a Friend! \*\***